

Dimensions(in/mm)		
H	H1+H2	W
.118(3.00)	.059(1.50)+.059(1.50)	.079(2.00)
.138(3.50)	.059(1.50)+.059(1.50)	
.157(4.00)	.079(2.00)+.079(2.00)	.098(2.50)
.177(4.50)	.079(2.00)+.098(2.50)	
≥.197(5.00)	.098(2.50)+.098(2.50)	

REV	LOCATIONS	DESCRIPTION	DATE	REVISER	APPD
1	△	Update Housing structure	15/JUL/24	MATT	LEO

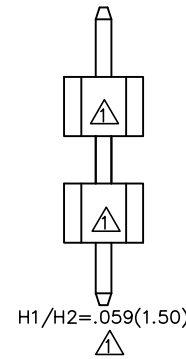
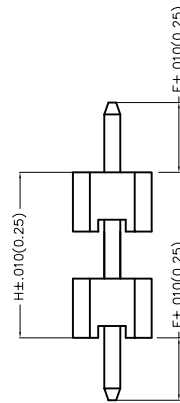
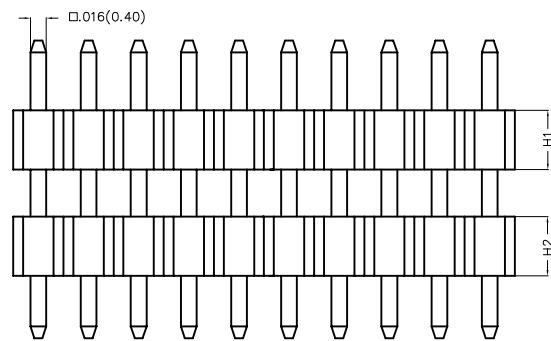
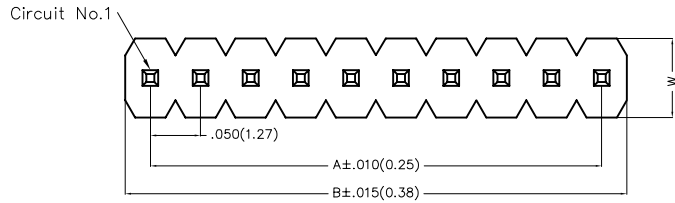
SPECIFICATIONS

Electrical

Current Rating:1.0A AC(rms)/DC  
Voltage Rating:250V AC(rms)/DC  
Contact Resistance:20 mΩ Max  
Insulation Resistance:1000 MΩ Min  
Withstanding Voltage:600V AC r.m.s  
Temperature Range-Operating: -40°C~+105°C

Material and Plating

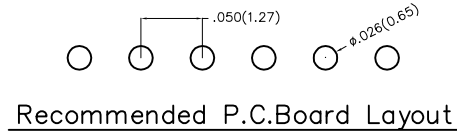
Housing:Glass Filled Polyester( UL 94V-0) ,Colour:Black  
Pin:Brass  
Pin Plating: Gold plated/ Selective gold plated on contact area and 120μm Min. matte tin plated on tails area



Ordering Information

FPH 127 29 - S XX S X XX 4 XX XX XX B  
1 2 3 4 5 6 7 8 9 10 11 12 13

1 Category FPH-Pin Header	2 Series Number 127-Pitch1.27mm	3 Distinction No. 29	4 Row Option S-Single Row	5 Circuits XX	6 Entry Angle S-180° Vertical	7 Plating 1-Gold plated 7-Selective gold plated on contact area and matte tin plated on tails area
8 Thickness of Plating 01-1μ 15-15μ Custom plate available	9 Material-Resin 4-PA6T	10 E Size 01,02...-Serial number (See Table1)	11 F Size 01,02...-Serial number (See Table1)	12 H Size 01,02...-Serial number (See Table1)	13 Packaging B-PE Bag	



THIRD ANGLE PROJECTION	GENERAL TOLERANCES (UNLESS SPECIFIED)		APPROVE BY JACK	DATE 17/DEC/19	PART NO. FPH12729-SXXSXX4XXXXXXB	ITEM NO. FPH12729	
	DESIGN UNITS Inch (metric)	X.±.012(0.30)	X'.±5'	CHECKED BY CHERRY	DATE 17/DEC/19	TITLE Board to Board(Pin Header) Pitch 1.27mm 180° Vertical(DIP)	
SCALE 5:1	SIZE A4	X.XX±.006(0.15)	.XX'±1'	DRAWN BY ZOEY	DATE 17/DEC/19	THIS DRAWING CONTAINS INFORMATION THAT IS PROPRIETARY TO TXGA INDUSTRIAL ELECTRONICS(S.Z)CO.,LTD AND SHOULD NOT BE USED WITHOUT WRITTEN PERMISSION	
		X.XXX±.004(0.10)	.XXX'±0.5'			REV 1	SHEET NO. 1/3

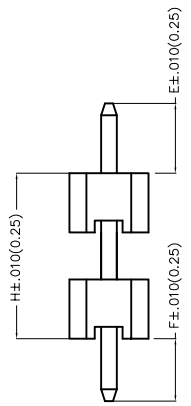
REV	LOCATIONS	DESCRIPTION	DATE	REVISER	APPD

Table1

Serial number	Dimensions (in/mm) E	Serial number	Dimensions (in/mm) E
01	.059(1.50)	19	.236(6.00)
02	.069(1.75)	20	.246(6.25)
03	.079(2.00)	21	.256(6.50)
04	.089(2.25)	22	.266(6.75)
05	.098(2.50)	23	.276(7.00)
06	.108(2.75)	24	.285(7.25)
07	.118(3.00)	25	.295(7.50)
08	.128(3.25)	26	.305(7.75)
09	.138(3.50)	27	.315(8.00)
10	.148(3.75)	28	.325(8.25)
11	.157(4.00)	29	.335(8.50)
12	.167(4.25)	30	.344(8.75)
13	.177(4.50)	31	.354(9.00)
14	.187(4.75)	32	.364(9.25)
15	.197(5.00)	33	.374(9.50)
16	.207(5.25)	34	.384(9.75)
17	.217(5.50)	35	.394(10.00)
18	.226(5.75)	36	

Serial number	Dimensions (in/mm) F	Serial number	Dimensions (in/mm) F
01	.059(1.50)	19	.236(6.00)
02	.069(1.75)	20	.246(6.25)
03	.079(2.00)	21	.256(6.50)
04	.089(2.25)	22	.266(6.75)
05	.098(2.50)	23	.276(7.00)
06	.108(2.75)	24	.285(7.25)
07	.118(3.00)	25	.295(7.50)
08	.128(3.25)	26	.305(7.75)
09	.138(3.50)	27	.315(8.00)
10	.148(3.75)	28	.325(8.25)
11	.157(4.00)	29	.335(8.50)
12	.167(4.25)	30	.344(8.75)
13	.177(4.50)	31	.354(9.00)
14	.187(4.75)	32	.364(9.25)
15	.197(5.00)	33	.374(9.50)
16	.207(5.25)	34	.384(9.75)
17	.217(5.50)	35	.394(10.00)
18	.226(5.75)	36	

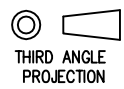

Serial number	Dimensions (in/mm) H	Serial number	Dimensions (in/mm) H
01	.118(3.00)	19	.472(12.00)
02	.138(3.50)	20	.492(12.50)
03	.157(4.00)	21	.512(13.00)
04	.177(4.50)	22	.531(13.50)
05	.197(5.00)	23	.551(14.00)
06	.217(5.50)	24	.571(14.50)
07	.236(6.00)	25	.591(15.00)
08	.256(6.50)	26	.610(15.50)
09	.276(7.00)	27	.630(16.00)
10	.295(7.50)	28	.650(16.50)
11	.315(8.00)	29	.669(17.00)
12	.335(8.50)	30	.689(17.50)
13	.354(9.00)	31	.709(18.00)
14	.374(9.50)	32	.728(18.50)
15	.394(10.00)	33	.748(19.00)
16	.413(10.50)	34	.768(19.50)
17	.433(11.00)	35	.787(20.00)
18	.453(11.50)	36	



<p>THIRD ANGLE PROJECTION</p>	GENERAL TOLERANCES (UNLESS SPECIFIED)		APPROVE BY JACK	DATE 17/DEC/19	PART NO. FPH12729-SXXSXXX4XXXXXXB	ITEM NO. FPH12729	<p>Building Technology Cornerstone</p>	
	DESIGN UNITS Inch (metric)	X.±.012(0.30)	X'.±5'	CHECKED BY CHERRY	DATE 17/DEC/19	TITLE Board to Board(Pin Header) Pitch 1.27mm 180° Vertical(DIP)		REV 1
	SCALE 5:1	SIZE A4	X.XX±.006(0.15)	.XX'±1'	DRAWN BY ZOEY	DATE 17/DEC/19	THIS DRAWING CONTAINS INFORMATION THAT IS PROPRIETARY TO TXGA INDUSTRIAL ELECTRONICS(S.Z)CO.,LTD AND SHOULD NOT BE USED WITHOUT WRITTEN PERMISSION	
			X.XXX±.004(0.10)	.XXX'±0.5'				

REV	LOCATIONS	DESCRIPTION	DATE	REVISER	APPD

Circuits (n)	Part No.	Dimensions(in/mm)		Circuits (n)	Part No.	Dimensions(in/mm)	
		A	B			A	B
1	FPH12729-S01SXXX4XXXXXXB	—	.050(1.27)	21	FPH12729-S21SXXX4XXXXXXB	1.000(25.40)	1.050(26.67)
2	FPH12729-S02SXXX4XXXXXXB	.050(1.27)	.100(2.54)	22	FPH12729-S22SXXX4XXXXXXB	1.050(26.67)	1.100(27.94)
3	FPH12729-S03SXXX4XXXXXXB	.100(2.54)	.150(3.81)	23	FPH12729-S23SXXX4XXXXXXB	1.100(27.94)	1.150(29.21)
4	FPH12729-S04SXXX4XXXXXXB	.150(3.81)	.200(5.08)	24	FPH12729-S24SXXX4XXXXXXB	1.150(29.21)	1.200(30.48)
5	FPH12729-S05SXXX4XXXXXXB	.200(5.08)	.250(6.35)	25	FPH12729-S25SXXX4XXXXXXB	1.200(30.48)	1.250(31.75)
6	FPH12729-S06SXXX4XXXXXXB	.250(6.35)	.300(7.62)	26	FPH12729-S26SXXX4XXXXXXB	1.250(31.75)	1.300(33.02)
7	FPH12729-S07SXXX4XXXXXXB	.300(7.62)	.350(8.89)	27	FPH12729-S27SXXX4XXXXXXB	1.300(33.02)	1.350(34.29)
8	FPH12729-S08SXXX4XXXXXXB	.350(8.89)	.400(10.16)	28	FPH12729-S28SXXX4XXXXXXB	1.350(34.29)	1.400(35.56)
9	FPH12729-S09SXXX4XXXXXXB	.400(10.16)	.450(11.43)	29	FPH12729-S29SXXX4XXXXXXB	1.400(35.56)	1.450(36.83)
10	FPH12729-S10SXXX4XXXXXXB	.450(11.43)	.500(12.70)	30	FPH12729-S30SXXX4XXXXXXB	1.450(36.83)	1.500(38.10)
11	FPH12729-S11SXXX4XXXXXXB	.500(12.70)	.550(13.97)	31	FPH12729-S31SXXX4XXXXXXB	1.500(38.10)	1.550(39.37)
12	FPH12729-S12SXXX4XXXXXXB	.550(13.97)	.600(15.24)	32	FPH12729-S32SXXX4XXXXXXB	1.550(39.37)	1.600(40.64)
13	FPH12729-S13SXXX4XXXXXXB	.600(15.24)	.650(16.51)	33	FPH12729-S33SXXX4XXXXXXB	1.600(40.64)	1.650(41.91)
14	FPH12729-S14SXXX4XXXXXXB	.650(16.51)	.700(17.78)	34	FPH12729-S34SXXX4XXXXXXB	1.650(41.91)	1.700(43.18)
15	FPH12729-S15SXXX4XXXXXXB	.700(17.78)	.750(19.05)	35	FPH12729-S35SXXX4XXXXXXB	1.700(43.18)	1.750(44.45)
16	FPH12729-S16SXXX4XXXXXXB	.750(19.05)	.800(20.32)	36	FPH12729-S36SXXX4XXXXXXB	1.750(44.45)	1.800(45.72)
17	FPH12729-S17SXXX4XXXXXXB	.800(20.32)	.850(21.59)	37	FPH12729-S37SXXX4XXXXXXB	1.800(45.72)	1.850(46.99)
18	FPH12729-S18SXXX4XXXXXXB	.850(21.59)	.900(22.86)	38	FPH12729-S38SXXX4XXXXXXB	1.850(46.99)	1.900(48.26)
19	FPH12729-S19SXXX4XXXXXXB	.900(22.86)	.950(24.13)	39	FPH12729-S39SXXX4XXXXXXB	1.900(48.26)	1.950(49.53)
20	FPH12729-S20SXXX4XXXXXXB	.950(24.13)	1.00(25.40)	40	FPH12729-S40SXXX4XXXXXXB	1.950(49.53)	2.000(50.80)

 THIRD ANGLE PROJECTION	GENERAL TOLERANCES (UNLESS SPECIFIED)		APPROVE BY JACK	DATE 17/DEC/19	PART NO. FPH12729-SXXSXXX4XXXXXXB	ITEM NO. FPH12729	 Building Technology Cornerstone	
	DESIGN UNITS Inch (metric)	X.±.012(0.30) X.X±.008(0.20)	X:±5° .X'±2'	CHECKED BY CHERRY	DATE 17/DEC/19	TITLE Board to Board(Pin Header) Pitch 1.27mm 180° Vertical(DIP)		REV 1
SCALE 5:1	SIZE A4	X.XX±.006(0.15) X.XXX±.004(0.10)	DRAWN BY ZOEY	DATE 17/DEC/19	THIS DRAWING CONTAINS INFORMATION THAT IS PROPRIETARY TO TXGA INDUSTRIAL ELECTRONICS(S.Z)CO.,LTD AND SHOULD NOT BE USED WITHOUT WRITTEN PERMISSION			